

.25" BLEED

TRI_FOLD (8.5" x 11")

The blue indicates a .25" bleed, the white area is the page size and the black dotted line is the trim line. Please keep type or other items .25" inside the live area as shown by grey dotted line. The Blue line shows final PDF size 9.0" x 11.5" including .25" bleed.

BLEED

The grey area is the bleed area, which extends beyond the edge of the page by .25". All photos and backgrounds that go to the edge of page should extend beyond the edge of the page by .25". Anything in this area will be trimmed off after printing. When saving your PDF please include the bleed area. (the finished size will be 9.0" x 11.5", the page should be centered with the .25" bleed around all four sides)

Bleed should extend .25" past page edge.
(as shown in sample photo)

FOLD
PANEL

BACK
PANEL

FRONT
PANEL

FOLD LINE 3.625

FOLD LINE 7.3125

3.625"

3.6875"

3.6875"

.25" BLEED

.25" BLEED

9.0" Includes bleed

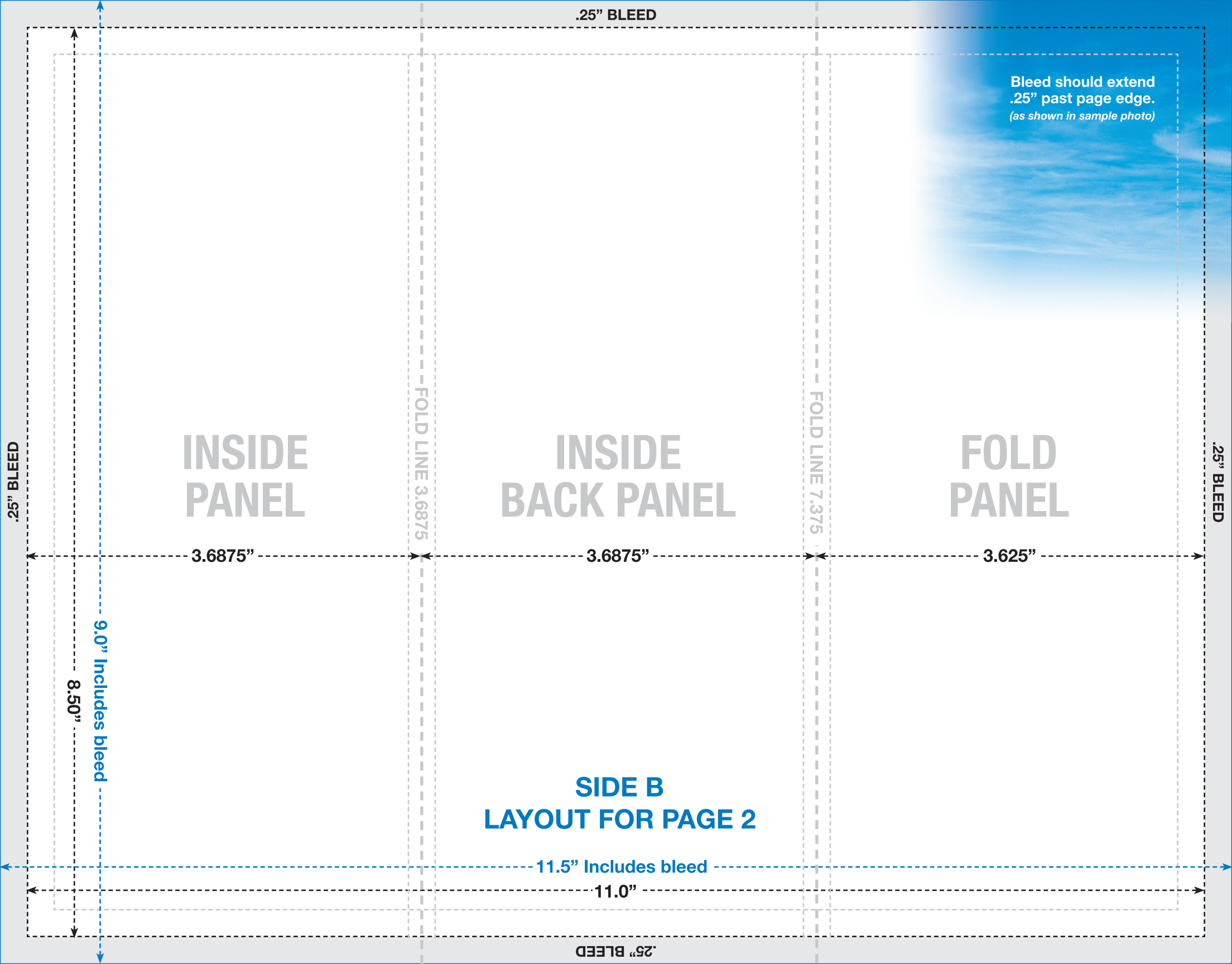
8.50"

SIDE A

LAYOUT FOR PAGE 1

11.5" Includes bleed

.25" BLEED



.25" BLEED

Bleed should extend
.25" past page edge.
(as shown in sample photo)

INSIDE
PANEL

INSIDE
BACK PANEL

FOLD
PANEL

FOLD LINE 3.6875

FOLD LINE 7.375

3.6875"

3.6875"

3.625"

.25" BLEED

.25" BLEED

9.0" Includes bleed

8.50"

**SIDE B
LAYOUT FOR PAGE 2**

11.5" Includes bleed

11.0"

.25" BLEED