

.25" BLEED

DOUBLE-FOLD (8.5" x 14")

The blue indicates a .25" bleed, the white area is the page size and the black dotted line is the trim line. Please keep type or other items .25" inside the live area as shown by grey dotted line. The Blue line shows final PDF size 9.0" x 14.5" including .25" bleed.

BLEED

The grey area is the bleed area, which extends beyond the edge of the page by .25". All photos and backgrounds that go to the edge of page should extend beyond the edge of the page by .25". Anything in this area will be trimmed off after printing. When saving your PDF please include the bleed area. (the finished size will be 9.0" x 14.5", the page should be centered with the .25" bleed around all four sides)

Bleed should extend .25" past page edge. (as shown in sample photo)

FOLD PANEL

FOLD PANEL

BACK PANEL

FRONT PANEL

3.5"

3.5"

3.5"

3.5"

9.0" Includes bleed

8.50"

14.5" Includes bleed

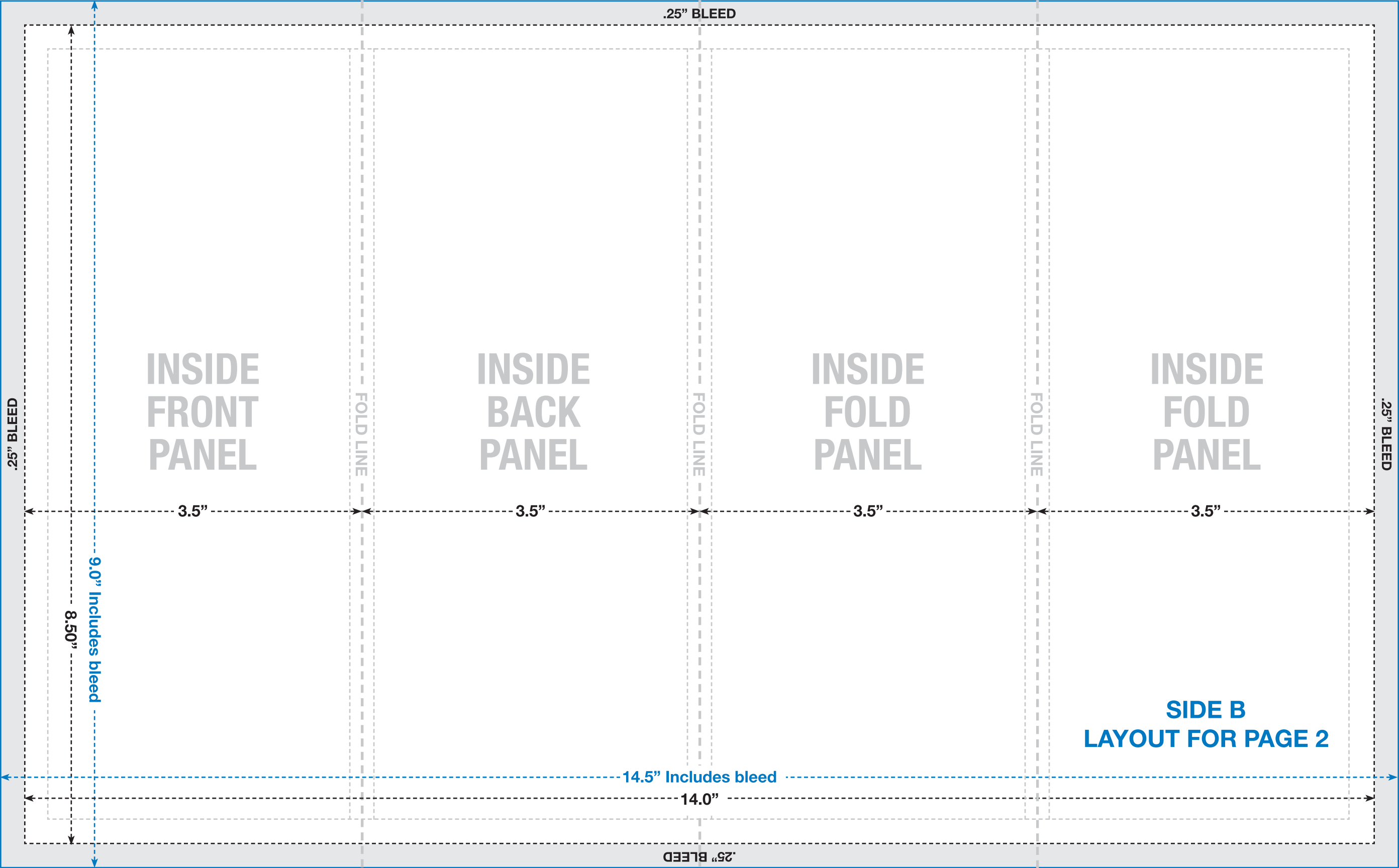
14.0"

**SIDE A
LAYOUT FOR PAGE 1**

.25" BLEED

.25" BLEED

.25" BLEED



.25" BLEED

INSIDE
FRONT
PANEL

INSIDE
BACK
PANEL

INSIDE
FOLD
PANEL

INSIDE
FOLD
PANEL

FOLD LINE

FOLD LINE

FOLD LINE

.25" BLEED

3.5"

3.5"

3.5"

3.5"

.25" BLEED

9.0" Includes bleed

8.50"

**SIDE B
LAYOUT FOR PAGE 2**

14.5" Includes bleed

14.0"

.25" BLEED